
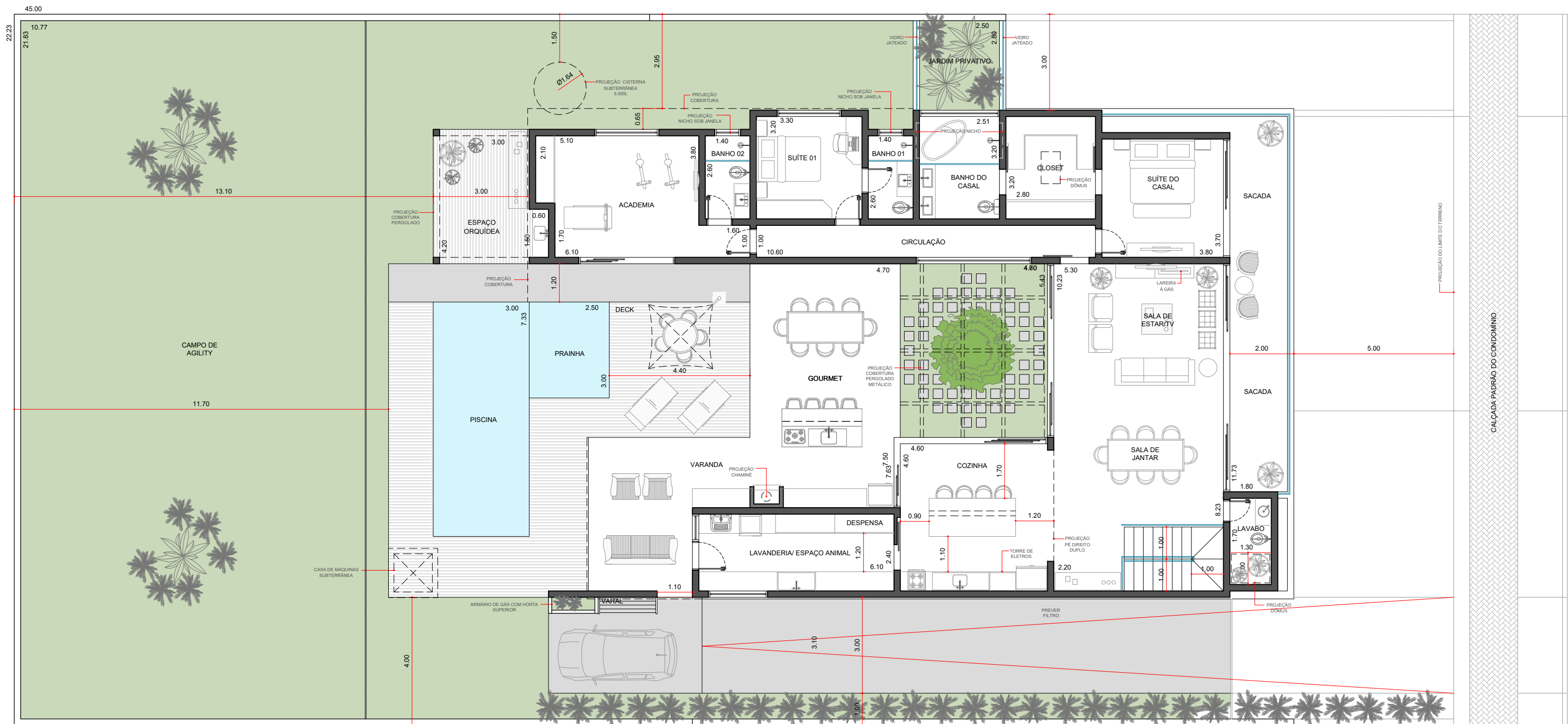


PLANTA (pav. subsolo) 

ESC: 1:125



EDUARDO RODRIGUES
ARQUITETURA



PLANTA (pav. térreo)

ESC: 1:125

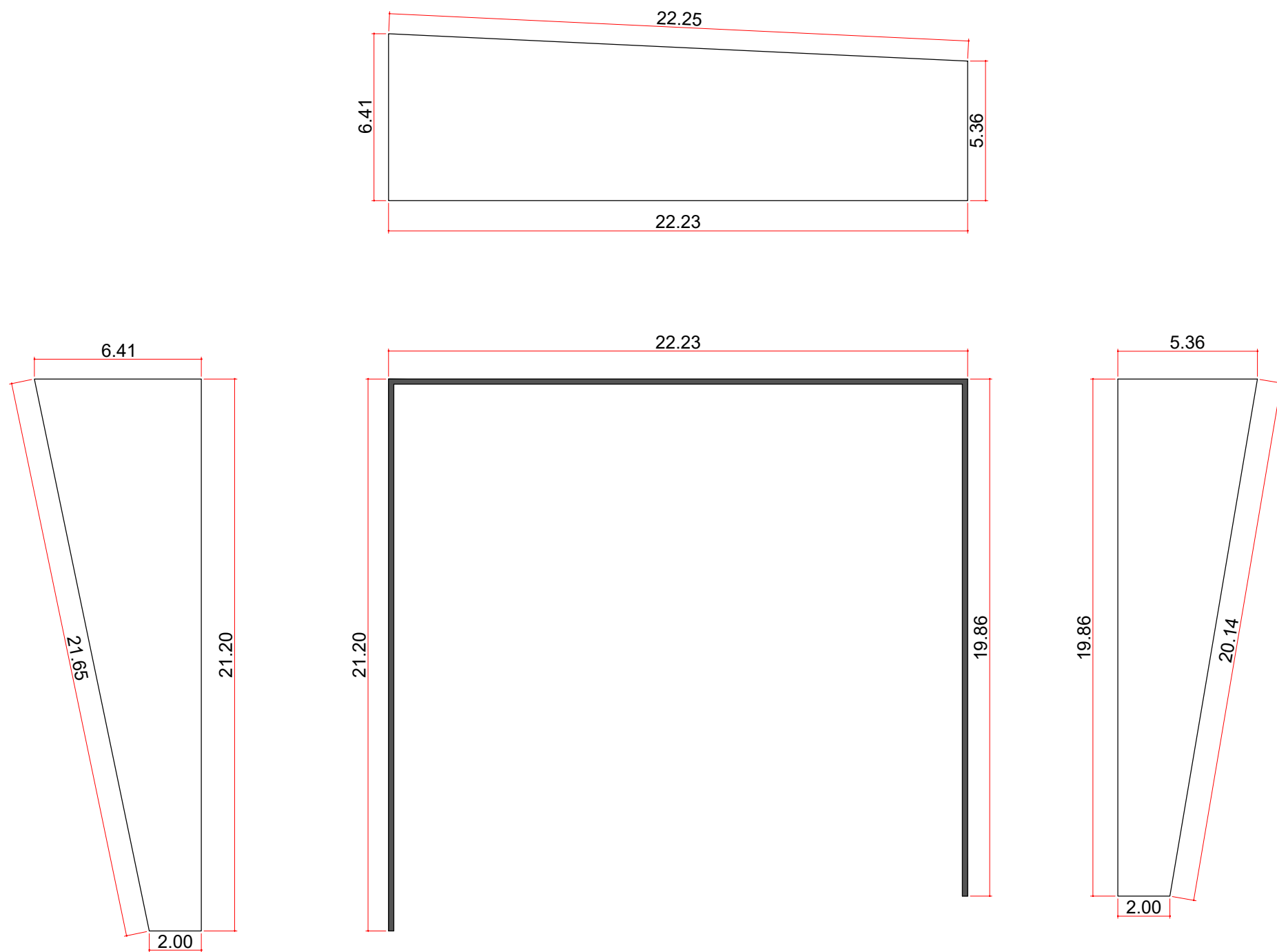


EDUARDO RODRIGUES
ARQUITETURA

CÉSAR E RITA
TERRAS DE SÃO LUCAS
Q. H
L. 26
1000.32 m²

subsolo	48.47
térreo	201.83
CORPO	250.30
garagem/hall(ent)	56.98
varanda	59.38
piscina	29.49
sacada	45.02
TOTAL	441.17

subsolo	48.47
térreo	196.22
CORPO	244.69
garagem/hall(ent)	56.98
varanda	55.63
piscina	29.49
sacada	45.02
TOTAL	431.81



MURO DE ARRIMO
ESC: 1.50

